

LANDSCAPE PARK ERDEKAUT

PHOTO SPOTS IN THE WEST PALATINATE

MOTIF-DESCRIPTION

Erdekaut is a nature reserve that appeals to the photographer with multiple lakes and landscape formations - from animal photography to beautiful reflections in the sunrise in the lakes. It is an El Dorado for nature photographers and also offers the opportunity for a day trip.

DIRECTIONS AND LOCATION

The over 60 hectare large landscape protection area Erdekaut is located between Eisenberg and Hettenleidelheim to the majority east of the B47. You can reach Erdekaut via the motorway A6 (Saarbrücken-Mannheim), exit 18 Wattenheim, then onto the B47 in the direction of Eisenberg; alternatively, you can take the Eistalbahnhof railway (Grünstadt-Eiswoog), which stops at the Eisenberg train station.

PROFESSIONAL TIPS



All year round; 6 am - 9 am depending on the season



Clouds with sun spots; sun



16-35 mm, 35 mm, 24-70 mm, possibly 70-200 mm details, possibly for animals Tele 400 mm



Polarising filter and soft grey gradient GND 16 or GND 8



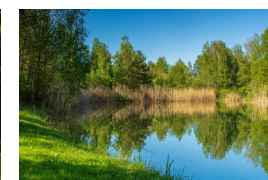
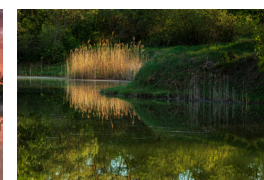
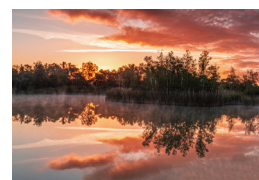
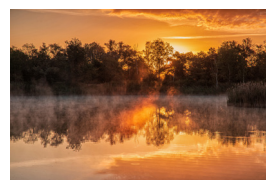
Tripod: Yes



From the Erdekaut car park on the B47, a path leads off to the right after approx. 110 m. Passing a small pond, after approx. 160 m you approach the recording point on a massive park bench. At sunrise in autumn and spring, this lake with its reflections offers an ideal place for special nature shots.



49.54649, 8.07268



MAP OF THE SURROUNDING AREA AND POIS

- » Restaurant „Landgasthof zur Seltenbach“
- » Parking area at B47 in a side street (the first entrance on the right after the fishing club, coming from the A6)

